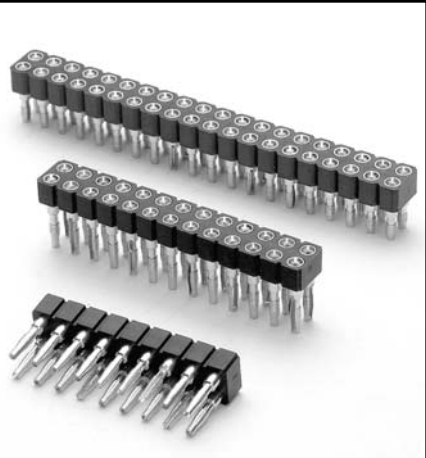


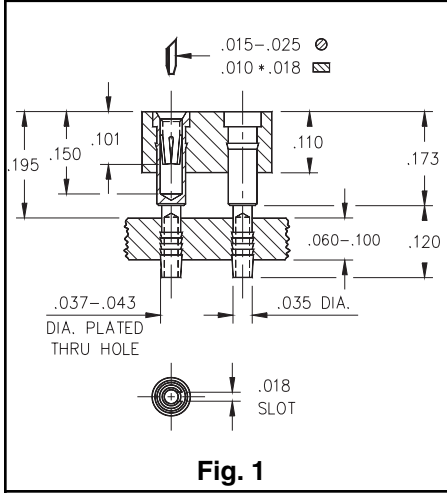
- Compliant tail solderless press-fit: MM #4612 or #4613 pins. Use series 446...012 for .060"- .120" thick boards, and series 446...013 for .090"- .130" thick boards. See Page 131 for details.
- Compliant tail receptacles can be inserted and removed without any degradation of the plated thru-hole.
- Hi-Rel, 4 finger BeCu #30 contact is rated at 3 amps. See page 208 for details.
- Insulators are high temp. thermoplastic.



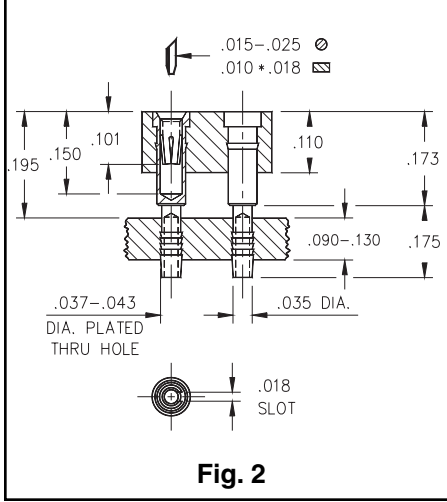
APPLICATION OF COMPLIANT TAIL PINS

Mill-Max's patented* compliant tail features precision machined pins that are hollow and slotted to conform to a .040" ± .003" diameter PTH. As the pin is inserted, the slot compresses to fit the PTH, thus avoiding damage (see illustration at left). The pin's tail has fine serrations that form a perfect "gas tight" connection that doesn't require soldering. And since the pin doesn't damage the hole, compliant tail sockets and connectors can be easily replaced.

*Patent No. 4,799,904.



Ordering Information	
Fig. 1	Series 446...012
	446-XX-2__-41-012000 Specify # of pins ↘ 02-64
Fig. 2	Series 446...013
	446-XX-2__-41-013000 Specify # of pins ↘ 02-64



RoHS
2002/95/EC

XX=Plating Code
See Below

For RoHS compliance
select ◊ plating code.

SPECIFY PLATING CODE XX=	13 ◊	93	99	43 ◊	44 ◊
Sleeve (Pin)	10μ" Au	200μ" Sn/Pb	200μ" Sn/Pb	200μ" Sn	200μ" Sn
Contact (Clip)	30μ" Au	30μ" Au	200μ" Sn/Pb	30μ" Au	200μ" Sn